

FOOT ORIENTEERING 4-DAYS-EVENT OPENED FOR EVERYBODY

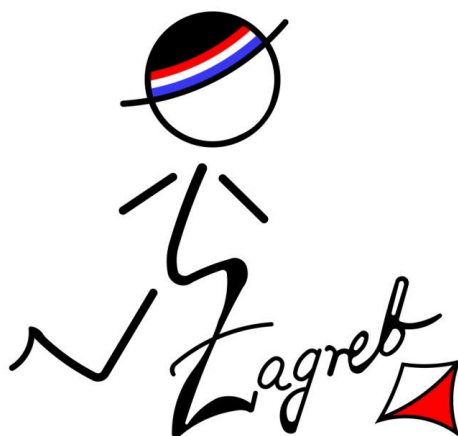
# KRIŽEVCI - KALNIK

## CROATIA

**24th Zagreb Open 2024 - 4 Days Event**

May 30th – June 2nd 2024

**BULLETIN no. 2**





# 24th Zagreb Open 2024 - 4 Days Event

Foot orienteering 4-days-event opened **for everybody**

IOF rules and Croatian Orienteering Federation regulations apply.

Entries are individual responsibility of competitors for each Stage of 4-days-event: 1) Sprint Distance, 2) Forest Sprint Distance, 3) Long Distance and 4) Middle Distance. You can chose Stages independently, but for final result Stages 1,3 and 4 sum up. There is one victory ceremony after the last Stage for the Zagreb Open Event for Stages 1,3 and 4. There is one separate victory ceremony only for forest sprint Event (Stage2) . Croatian sprint Championships (Stage 1) will have a separate victory ceremony and also there will be a victory ceremony for World Ranking Event on Stage 3.

## Organizers:

### Main Organizer:

Orienteering Club "Vihor", Zagreb, Ribnjak 2, 10000 Zagreb

✉ [vihor@vihor.hr](mailto:vihor@vihor.hr)

[www.vihor.hr](http://www.vihor.hr)



### Supported By:



2024 - 05/30 - 06/02



[www.vihor.hr](http://www.vihor.hr)



Zagreb



UDRUGA  
KINEZIOLOGA  
KRIŽEVCI



OPĆINA KALNIK  
KALNIK  
GRAD KRALJEVA



## General Information:

### Type of Event:

**4 Days Event for "Zagreb Open 2024"** May 30th – June 2nd 2024

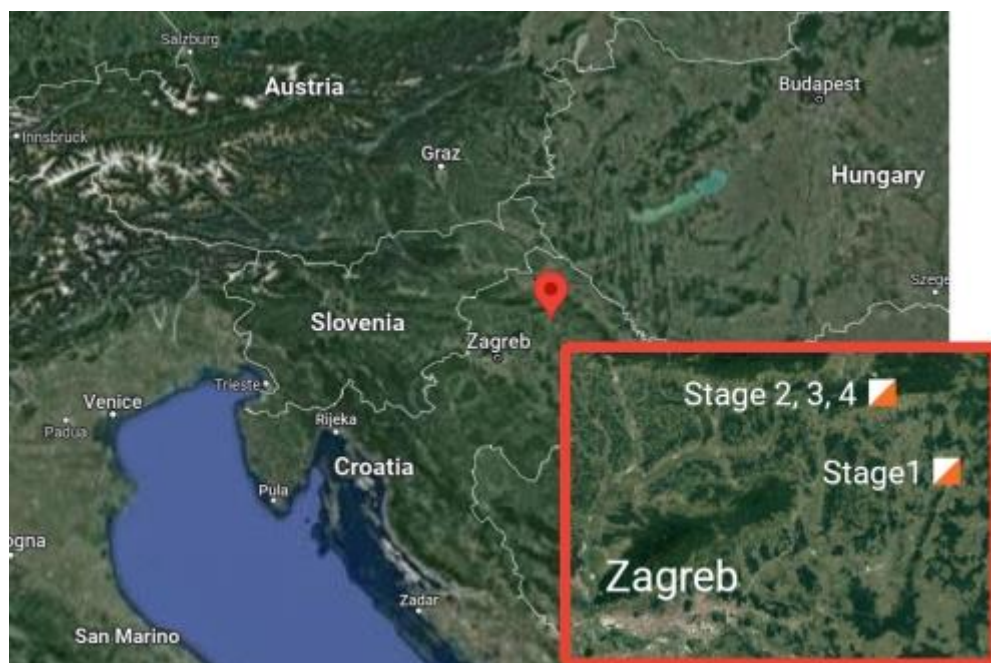
You can chose Stages independently, but for final result Stages 1,3 and 4 sum up.

Training Event – it is possible to provide orienteering maps of some other terrains in Zagreb upon request and some small fee.

## Competition Centre:

### Competition Centre Location(s):

Competition Centre is generally situated in the Finish Arena of every Stage. On the 1st Stage it is inside the Quarantine area at the town's Stadium. On Stages 2, 3 and 4 there will be an Info Tent. For detailed time schedules see further info.



Monday	2024-05-27 – Zagreb	<a href="#">45.815158601780574</a> , <a href="#">15.981973194811465</a>
Thursday	2024-05-30 – Križevci -	<a href="#">46.026126</a> , <a href="#">16.549483</a>
Friday	2024-05-31 – Kalnik -	<a href="#">46.132363</a> , <a href="#">16.463380</a>
Saturday	2024-06-01 – Kalnik -	<a href="#">46.132363</a> , <a href="#">16.463380</a>
Sunday	2024-07-02 – Kalnik	<a href="#">46.132363</a> , <a href="#">16.463380</a>

## Event Programme:

### Schedule

Monday to Wednesday 2024-05-27/28/29	training possibilities on maps in Zagreb	maps can be collected at competition office on address Ribnjak 2
Thursday 2024-05-30	first Start 14:00 p.m.	Zagreb Open 2024 - <b>Stage 1*: Sprint Distance - Križevci</b> + Prize Giving Ceremony for Croatian Sprint Championships - Križevci
Friday 2024-05-31	first Start 15:00 p.m.	Zagreb Open 2024 - <b>Stage 2: Forest sprint Distance - Kalnik</b> + Prize Giving Ceremony for Forest Sprint Event (merged classes) - Kalnik
Saturday 2024-06-01	first Start 11:00 a.m.	Zagreb Open 2024 - <b>Stage 3: Long Distance/WRE/ - Kalnik</b> + Prize Giving Ceremony for World Ranking Event (M21E & W21E) - Kalnik
Sunday 2023-06-02	first Start 10:00 a.m.	Zagreb Open 2024 - <b>Stage 4: Middle Distance - Kalnik</b> + Prize Giving Ceremony Zagreb Open 4 Days - Zagreb

\*stages that sum up for overall result

## Sport Ident:

We will use SportIdent system for punching. Renting of SI card is 2€ . SIAC (contactless punching) will be **turned on** at all Stages.

## Prize Giving and Awards:

4 Days Event for "Zagreb Open 2024" (May 30th to June 2nd)

For final result OF "Zagreb Open 2024" **Stages 1, 3 and 4 sum up**. There is one victory ceremony after the last Stage for the Zagreb Open Event.

- 2024-05-30. Prize giving ceremony for Croatian Sprint Championships (Stage 1 - only Croatian runners)
- 2024-05-31. Prize giving ceremony for Forest Sprint Event (Stage2) with merged classes,
- 2024-06-01. Prize giving ceremony for World Ranking Event on Stage 3
- 2024-06-02. Prize giving for Stages 1,3,4 added together for overall ranking of Zagreb Open 2024 Event

**Prize giving ceremony for Zagreb Open Event will be at the Finish arena on Kalnik on Stage 4 on June 2nd 2024.**

### Claims and Complaints

Zagreb Open 4 Days - In the case of cancelling the Stage/course/ for any class, the organizer will sum-up the final results in his own manner, taking in consideration the best way to maintain fairness.



**Classes for 24th Zagreb Open - 4 Days - Stages 1,3,4**

W12 W14 W16 W20    W21E W21A W21B    W35 W40 W45 W50 W55 W60 W65

M12 M14 M16 M20    M21E M21A M21B    M35 M40 M45 M50 M55 M60 M65 M70

OPEN short, OPEN long

**Open LONG** class is the equivalent (same or similar) of M35 class

**Open SHORT** class is the equivalent (same or similar) of M14 class

Classes with few entries have been merged with other classes according the age of competitors (MW10 to MW12)

For the forest Sprint Event (**Stage 2 - Boulder sprint**) we merged classes as follows:

**M21**                M21E, M21B & OPEN LONG

**W21**                W21E, W21B

**M14**                M12, W12

**W14**                W12, W14

**M20**                M16, M20

**W20**                W16, W20

**M35+**               M35, M45

**W35+**               W35, W45

**M55+**               M55, M65, M70

**W55+**               W55, W65

**OPEN SHORT**    OPEN SHORT

**Warning !**

After the deadline is expired for final entries, it will be possible to enter any "Zagreb Open 4 Days" classes only if there will be some vacant places on Stage 1 and 3. For Stages, 2 & 4 there will be only limited vacant places in classes and few more vacant places in OPEN LONG and OPEN SHORT classes.



**Entry fees for "Zagreb Open 2024 - 4 Days"**

	UNTIL 31. 12. 2023		UNTIL 1. 2. 2024		UNTIL 20. 4. 2024		UNTIL 19. 5. 2024	
	ALL STAGES	ONE STAGE	ALL STAGES	ONE STAGE	ALL STAGES	ONE STAGE	ALL STAGES	ONE STAGE
MW10 – MW16	40	10	40	10	40	10	48	12
MW18 – MW70 Open long & short	60	15	64	16	68	18	75	20

Please include in your payment **fee** for bank charges on your account for payments not paid via SEPA bank transfer payments (EU internet banking). We will inform you if Bank charges exceed regular fee and it will be billed to you. Please do not use REVOLUT payment method as the bank charges are very big and you will have to cover those costs..

Registration will be through the platform: [www.orienteeringonline.net](http://www.orienteeringonline.net)

[OrienteeingOnline.net](http://OrienteeingOnline.net) – Entry link

If need you can make entry via our e-mail: [vihor@vihor.hr](mailto:vihor@vihor.hr)

Entry is not valid until entry money is received. Fees to be paid latest within 7 days after the deadline in which entry was submitted. All fees have to be paid in advance by our bank account.

**Banking details:**

IBAN: HR6524840081101296342  
 SWIFT: RZBHHR2X  
 Bank: Raiffeisen Bank  
 Recipient: ORIJENTACIJSKI KLUB VIHOR  
 Ribnjak 2  
 10 000 Zagreb  
 Croatia

24th ZAGREB OPEN	Stage 1 SPRINT	Stage 2* SPRINT	Stage 3 LONG	Stage 4 MIDDLE
Distance to the Start	0 m = from a Quarantine	50 m	50 m	150 m
M21E	3,2km 40m 27KT	2,0km 90m 21KT	9,0km 450m 24KT	4,8km 240m 24KT
W21E	2,6km 30m 23KT	1,9km 80m 18KT	7,5km 320m 21KT	4,1km 210m 20KT
M12	1,8km 20m 14KT	merged with M14	1,7km 90m 6KT	1,4km 60m 7KT
W12	1,8km 20m 14KT	merged with W14	1,7km 90m 6KT	1,4km 60m 7KT
M14	2,0km 20m 16KT	1,2km 40m 11KT	2,1km 90m 11KT	1,6km 90m 10KT
W14	1,9km 20m 15KT	1,2km 40m 11KT	2,0km 100m 8KT	1,6km 90m 10KT
M16	2,0km 20m 16KT	merged with M20	4,9km 200m 13KT	3,3km 160m 17KT
W16	1,9km 20m 15KT	merged with W20	3,6km 170m 12KT	3,1km 90m 13KT
W20	2,3km 30m 17KT	1,7km 60m 14KT	5,6km 280m 14KT	3,6km 190m 17KT
M20	2,6km 30m 19KT	2,0km 90m 17KT	6,8km 250m 23KT	4,1km 190m 17KT
M21B	3,2km 40m 27KT	merged with M21	4,9km 200m 13KT	3,5km 170m 15KT
W21B	2,6km 30m 23KT	merged with W21	3,6km 170m 12KT	3,1km 90m 13KT
M35	2,6km 30m 23KT	2,0km 90m 17KT	6,8km 250m 23KT	4,1km 210m 17KT
W35	2,3km 30m 17KT	1,7km 60m 14KT	5,6km 280m 14KT	3,6km 190m 17KT
M45	2,6km 30m 19KT	merged with M35+	6,0km 270m 19KT	4,1km 190m 20KT
W45	2,0km 20m 16KT	merged with W35+	4,8km 220m 17KT	3,3km 160m 17KT
M55	2,3km 30m 17KT	1,5km 50m 12KT	4,6km 210m 17KT	3,3km 160m 17KT
W55	2,0km 20m 16KT	1,3km 40m 10KT	3,9km 150m 13KT	3,1km 90m 13KT
M65	1,4km 20m 13KT	merged with M55+	3,9km 150m 13KT	3,1km 90m 13KT
W65	1,4km 20m 13KT	merged with W55+	2,1km 90m 11KT	2,0km 100m 11KT
M70	1,4km 20m 13KT	merged with M55+	2,1km 90m 11KT	2,0km 100m 11KT
OPEN LONG	2,6km 30m 19KT	merged with M21	4,9km 200m 13KT	3,5km 170m 15KT
OPEN SHORT	1,8km 20m 14KT	1,2km 40m 11KT	2,0km 100m 8KT	2,0km 100m 11KT

**\* STAGE 2 FOREST SPRINT the classes are merged as follows:**

CLASSES	MERGED CLASSES
M21	M21E, M21B, OPEN LONG
W21	W21E, W21B
M14	M12, M14
M20	M16, M20
M35+	M35, M45
M55+	W35, W45
W14	W12, W14
W20	W16, W20
W35+	W35, W45
W55+	W55, W65
OPEN SHORT	OPEN SHORT

## Embargoed Areas:

### Training Possibilities

On request, organizers can organize a training and provide training maps of similar nearby terrains for a small fee 5€ per map.

**It is not allowed to print out maps and go to training without a permission of a Club owning a map anywhere in Croatia. The permissions must be requested in written form.**

For questions and terms of use contact [vihor@vihor.hr](mailto:vihor@vihor.hr)

All competition areas are embargoed areas for competitors. Please respect Fair-play and do not train on old maps before the competition.

## Transport:

### IMPORTANT!

Please be aware that on Friday afternoon (especially!!!) and Thursday and Saturday morning traffic can be slower than usual so your trip to Križevci or Kalnik Start on time if you are traveling From Zagreb. For whatever a Google or similar navigation tells you, take **an hour extra** if you have to pass through or exit from Zagreb!

### Shops and Markets:

There is a national holiday on Thursday 2024-05-30. Most of the shops and supermarkets will not work. Also on Sunday.



## Toilets:

### STAGE 1

On Stage 1 you can use toilets at the Stadium.

There are toilets in the Cocktail Bar "Latino" (see Quarantine rules), but only if you are a guest. **For changing clothes and leaving your baggage and equipment, you can only use the Stadium stands.**

It is strictly forbidden to enter a bar or other facility in orienteering shoes or/and any dirty equipment!!!

### STAGES 2, 3, 4

Sanitary cabins will be provided by the organizer at Stage 2-4 (Kalnik) near the Finish.

You can not stay inside the mountain house Kalnik unless you are a guest or a customer of a restaurant.

## Sun:

Although Križevci and Kalnik are continental towns and villages, be aware that you can get sunburned. Wear a sunscreen SPF30 or higher, wear head cover and sunglasses if needed.

Ponesite kremu za sunčanje. U slučaju jakog sunca moguće je izgoriti.

## Bugs and Animals:

There are no animals that bite or sting other than mosquitoes and some horse flies, but not so much this part of a year. Wasps, bees and hornets are very rare, and will not engage with you. Spiders are not poisonous. You might see some bigger animals like deers, rabbits and all other not-harmful forest inhabitants, but they run away. If you see a snake just avoid any contact and move away.

## PETS

For your own pets:

**It is strictly forbidden to get your own pet (dog) to the area of the Start and onto the orienteering course.** Pets are allowed on the meadow beneath the finish area on forest stages, but keep them on a leash and so that in no manner they disturb competitors. Please keep them safe, in the shadow and hydrated.

If you have any doubts, contact the organizer.

If you have an emergency health situation with your pet, here are lists of vets on duty

<https://www.zgportal.com/zgservis/dezurni-veterinar-u-zagrebu-hitni-ambulantni-prijam-za-male-zivotinje/#veterina>

## MOSQUITOES and TICKS

There is a large possibility that you will get ticks - check yourselves after the race and some time after. Repellents don't work. If you notice a tick on your skin and remove it within a couple of hours, the biggest possibility is that it will do you no harm at all.

## Water and Hydration:

Tap water from public water supplies is drinkable all around north Croatia. You don't need to purchase any water in supermarkets.

At the Finish, there will be water for competitors provided by the organizer.

**Stage 2 to 4 has running spring water from a fountain nearby Finish and it is drinkable.** (It is the same water that is been bottled and sold as brand "Kala" ;) from Kalnik mountains )The organizer will put that water by the Finish corridor, but for drinking only.

Be considerate in consuming, so there is enough for all the runners. **Please use water when provided by organizer sparingly and for drinking only. Do not use cup water or bottled water for showering and washing!!**

## CLOTHING AND FOOTWEAR :

For all forest Stages **longer pants** and calf protection (gaiters) are highly recommended, almost mandatory. **Undergrowth has thorns!** Orienteering shoes are recommended on Stages 2-4. Earth is soft, sporadically with stones, so dub-spikes are not necessary but are useful.

Metal studs (dub-spikes) are not allowed on Stage 1. Ordinary asphalt running shoes may be used, but best is to use good trail-running shoes

## WATERCOURSES, MARSHES, CLIFFS, VEGETATION:

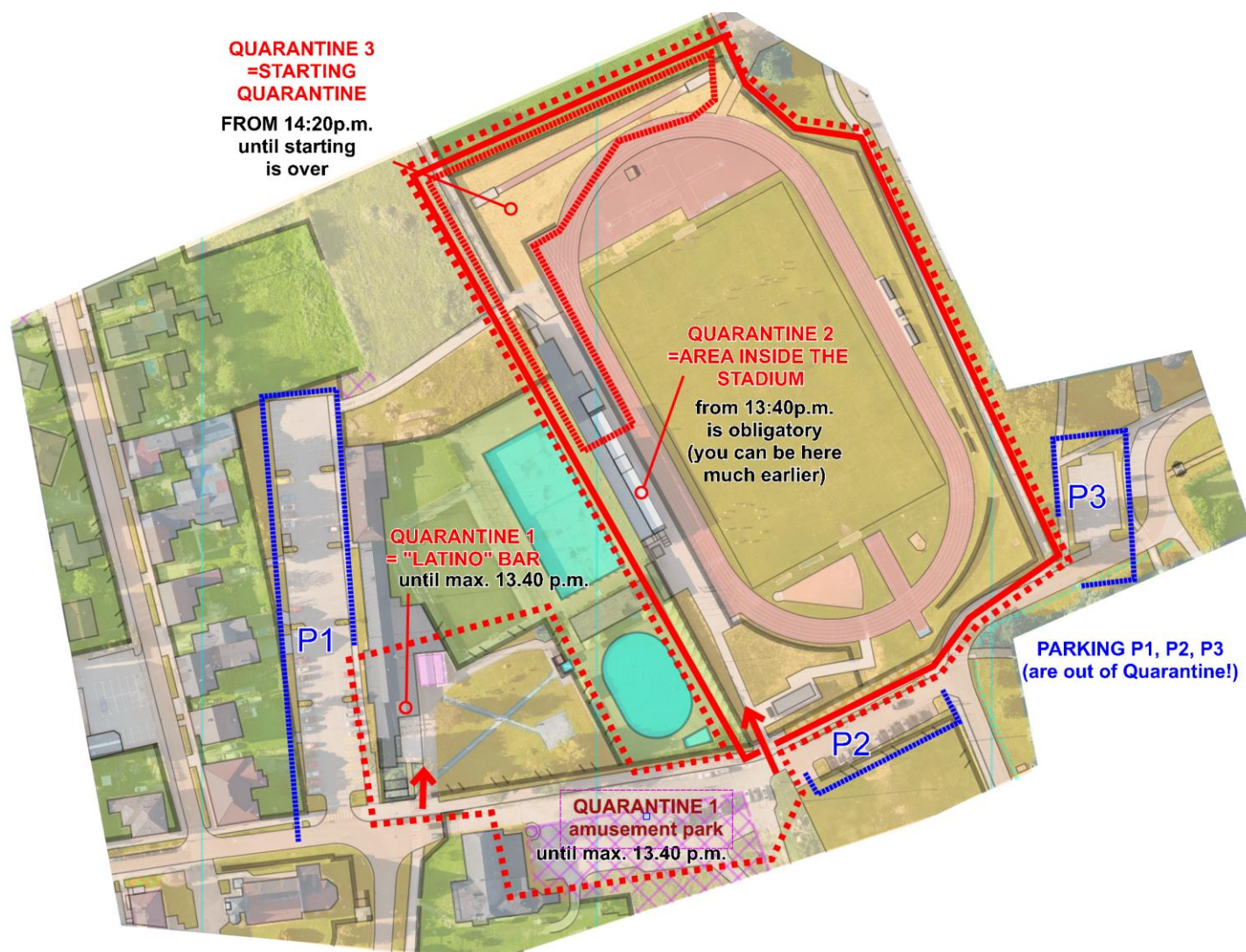
All water creeks and marshes are passable. High cliffs are not. Do not climb the cliffs or jump from them. All the courses are planned so that you **do not need to climb cliffs, neither you can profit from that!** Vegetation could be thicker in some parts of the map due to lot of rain and sun in the past months. More undergrowth is expected on the courses in next weeks.

## **Zagreb Open 2024 - Stage 1: Sprint Distance**

**GPS: 46.026126, 16.549483**

<b>Parking Location/Coordinates:</b>	town Križevci, City Stadium ("Gradski stadion Križevci") <a href="#">46.026126, 16.549483</a>
<b>CC:</b>	<a href="#">46.026619, 16.548824</a>
<b>Type of Competition:</b>	Sprint Distance - winner time 12-15 min fast running, mostly paved roads and urban parks Croatian Sprint Distance Championship
<b>Map:</b>	KRIŽEVCI, 1:4000 / 2.0m, ISSprOM2019-2, new map
<b>Cartography:</b>	Ivana Gobec; Damir Gobec 2024
<b>Time Schedule:</b>	<b>12:00</b> - CC opens <b>13:00</b> - sprint quarantine Starts (area Stadium, Latino bar and fun fiar area) <b>13:40</b> - strict Quarantine just inside the stadium <b>14:00</b> - first Start <b>14:20</b> - strict start Quarantine for competitors that have not started yet <b>17:00</b> - prize giving ceremony for Croatian national Championships (only Croatian runners)
<b>Distance to the Start:</b>	<b>50m</b>
<b>Warm-Up Area:</b>	Quarantine no. 3 (see picture)
<b>Outfit:</b>	<b>NO spike shoes allowed anywhere!</b>
<b>Traffic warning:</b>	Watch for the traffic. There will be no special traffic regulations. Traffic is light but please watch and be careful when crossing the roads.
<b>Water:</b>	Water will be supplied at the Finish. If you need to wash your shoes or clothes you can use a washing place at the entrance of the stadium, but only after the race is over, or be extra careful not to interfere with the runners.
<b>Areas:</b>	<b>Grass football field is not to be used for sitting or warming up!</b> <b>Please stay out of football field all time.</b> You can be at stadium seats as early as you want, and use toilet facilities.

# Quarantine



Parking places P1,P2 and P3 are outside of Quarantine! Please take your equipment and things you need for the race with you into the stadium.

There is Cocktail Bar "Latino" bar just near the Finish will open its door to all competitors so you can spend time there before the race and after the race. There you can go for a coffee or other drinks and chill in a nice atmosphere.

Also, there is a Funfair amusement park nearby. You can have fun, and enjoy a few rides.

You are allowed to use Latino bar and Funfair until 1.40 p.m. After that time you have to move to area 2 inside the Stadium. Don't leave your things in the Bar!



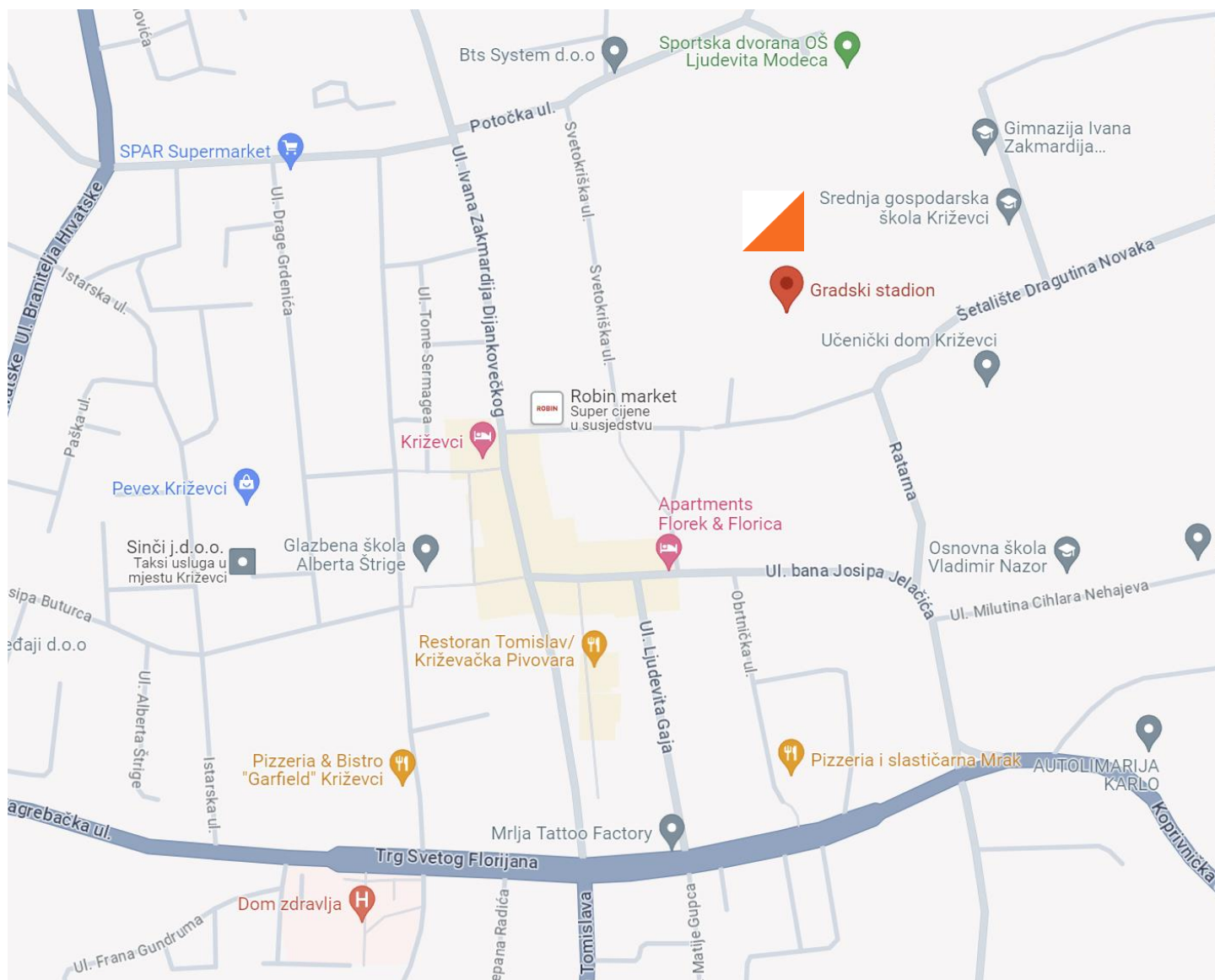
## Križevci / Map sample:



## Whereabouts and parking:

### Križevci - City stadium - location of Event - ([46.026126](#), [16.549483](#))

You can park your car on parking lot in front of the stadium P1 or on P2, P3 (look at the map of quarantine areas) or any place which is assigned for parking. On Thursday it is national Holiday so parking is free of charge in the city.



## STAGE 1 EXTRAS

There will be no special catering at the Finish area but there are few supermarkets just few hundred meters from the Finish but note that it is a National holiday on the race day so maybe those markets will be closed. If you want some good pizza or something from the grill, you can local restaurants. For a good drink in nice area you can sit in the bar just near the Finish area before the Start and after “Latino cocktail bar”



For more information about town please visit the official web page of Tourist Association - [Turistička zajednica grada Križevci - Križevci – Vrata Prigorja \(visitkrizevci.hr\)](https://www.visitkrizevci.hr)

City museum Križevci will be working on Friday morning so you can visit it [Gradski muzej Križevci – 70 godina centralno mjesto umjetnosti, kulture i povijesti \(gradski-muzej-krizevci.hr\)](https://www.gradski-muzej-krizevci.hr)





## Zagreb Open 2024 - Stage 2: Forest Sprint Distance

**GPS: 46.132363, 16.463380**

**Parking Location/Coordinates:** 46.132363, 16.463380

**CC:** [46.132902, 16.463473](#)

**Type of Competition:** Forest Sprint Distance

**Type of Terrain:** Mostly clean continental forest, slightly hilly, lots of boulders, technical, fast running

**Map:** KALNIK 1:4000 / 2.0m, ISOM 2017-2, new map

**Cartography:** Ivana Gobec; Damir Gobec 2024

**Time Schedule:** 13:00 - CC opens

15:00 - first Start

18:00 - prize-giving ceremony for forest sprint (just Stage 2)

**Distance to the Start:** 50m

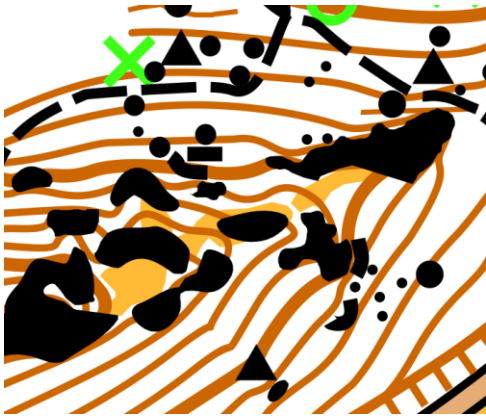
**Warm-Up Area:** Asphalt road and a meadow beneath the old castle (southern side).

**Outfit:** Orienteering outfit, long leg cover recommended, running shoes with spikes allowed

**IMPORTANT!:** Before control point no.100 be careful on the steep part of the path and follow the marked route to the last point

**Merged classes:** Check the class your class is merged in for this Stage. All courses are quite short with lot of single boulders but the forest is very runnable

## Kalnik forest sprint - Map Sample Stage 2:

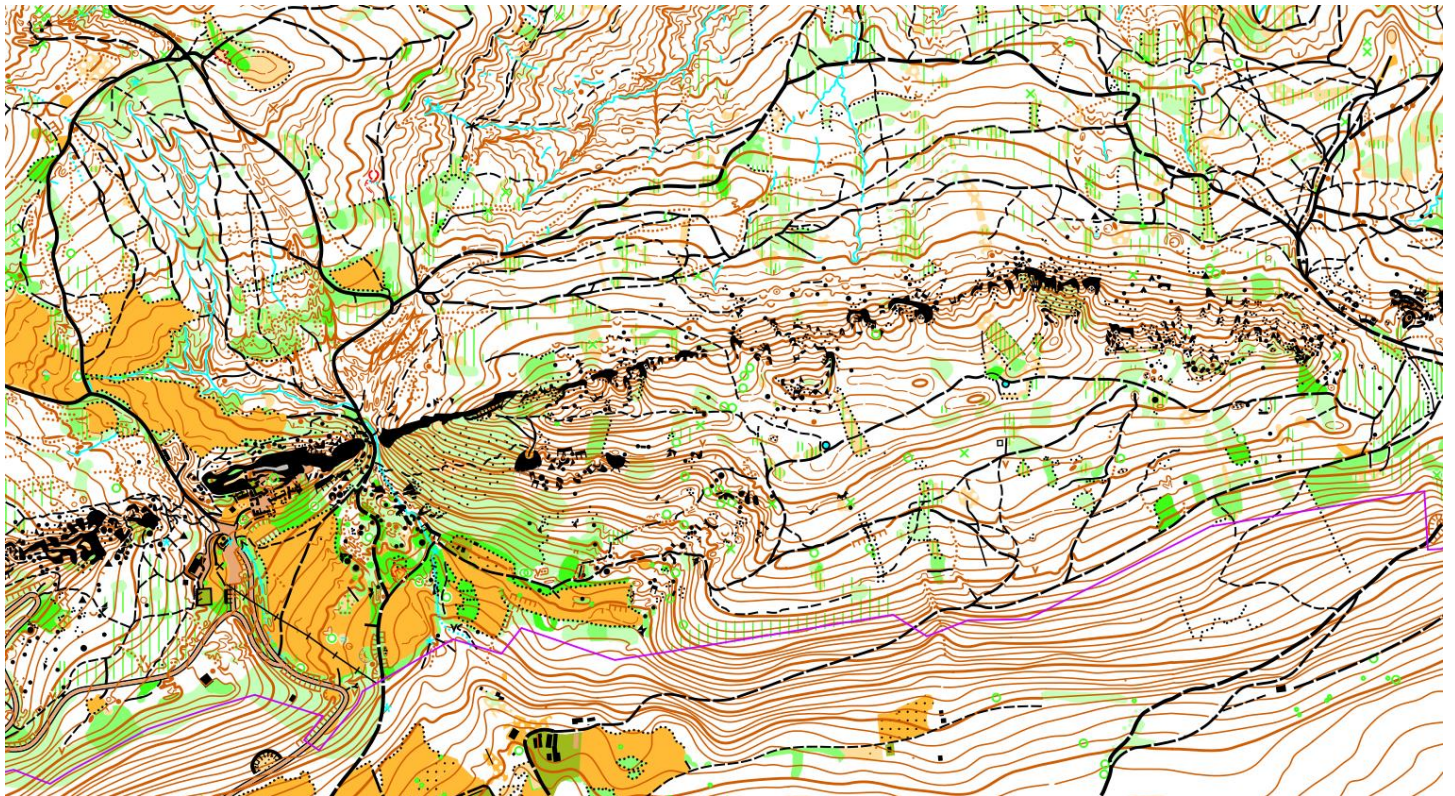


### SPECIAL SYMBOLS:

- ✕ rootstock or tree trunk
- ✕ man made feature
- ▲ man made earth features
- ✕ out of bounds (forbidden) area - dangerous !

## The old map

Kalnik was used for orienteering from 2012- 2015, and never since. A completely new map was made on Lidar data.





## Zagreb Open 2024 - Stage 3: Long Distance /WRE/ 46.132363, 16.463380

**Parking Location/Coordinates:** 46.132363, 16.463380

**CC:** [46.132902, 16.463473](#)

**Type of Competition:** Long Distance

**Type of Terrain:** Mostly clean continental forest with some boulders, hilly, very detailed, very technical, fast running

**Map:** KALNIK 1:10000 & 1:7500 / 5.0m, ISOM 2017-2, new map  
1:10000 (MW21, MW20, MW35, MW45)  
1:7500 (MW12, MW14, MW16, MW55; MW65, M70)

**Cartography:** Ivana Gobec; Damir Gobec 2024

**Time Schedule:** 09:00 - CC opens

11:00 - first Start

15:00 - prize-giving ceremony for World Ranking Event for M21E and W21E

**Distance to the Start:** 50m

**Warm-Up Area:** Asphalt road and a meadow beneath the old castle (southern side).

**Outfit:** Orienteering outfit, long trousers and calf protection recommended, running shoes with spikes allowed

**Refreshment** Longer courses (M21E, W21E, M35, W35, M20, W20) will have two refreshment stations and rest of the classes one (except, M12, W12, W14 and OPEN SHORT)  
Water will be supplied.

**Finish in run:** From the last control point no.100 to Finish run on the gravel road. The route will be marked, but not obligatory to strictly follow. It is the fastest way.

**Kalnik - Map Sample Stage 3:**



**SPECIAL SYMBOLS:**

- ✕ rootstock or tree trunk
- ✕ man made feature
- ▲ man made earth features
- ✕ out of bounds (forbidden) area - dangerous !

## Zagreb Open 2023 - Stage 4: Middle Distance

### 46.132363, 16.463380

**Parking Location/Coordinates:** 46.132363, 16.463380  
**CC:** [46.132902, 16.463473](#)

**Type of Competition:** Middle Distance  
**Type of Terrain:** Mostly clean continental forest with some "green" parts, hilly, very detailed, very technical, fast running in the open "white" forest. Some undergrowth in the areas

**Map:** KALNIK 1:7500 / 5.0m, ISOM 2017-2, new map

**Cartography:** Ivana Gobec; Damir Gobec 2024

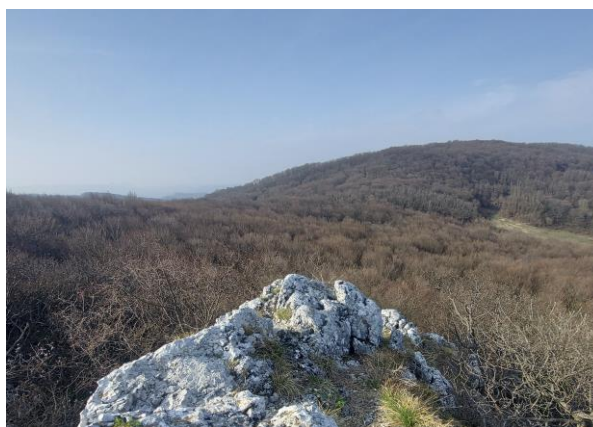
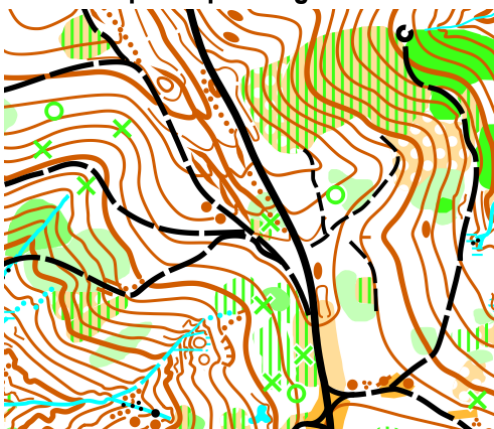
**Time Schedule:** 08:00 - CC opens  
**10:00** - first Start  
14:00 - prize-giving ceremony for 24th Zagreb Open (Stages 1, 3 and 4)

**Distance to the Start:** 200m

**Warm-Up Area:** Asphalt road and a meadow beneath the old castle (southern side).

**Outfit:** Orienteering outfit, long trousers and calf protection recommended, running shoes with spikes allowed

#### Kalnik - Map Sample Stage 4:



#### SPECIAL SYMBOLS:

- rootstock or tree trunk
- man made feature
- man made earth features
- out of bounds (forbidden) area - dangerous !

## SPECIAL SYMBOLS:

- ✕ rootstock or tree trunk
- ✕ man made feature
- ▲ man made earth features
- ✕ out of bounds (forbidden) area - dangerous !

**Rootstock** can vary in size from 1m to 4m high.

**Man made features (black cross)** are rare on the forest maps but in the city you can find different features from monuments to other sculptures or similar features

**Earth man made features** which are marked **with brown triangle** are similar to depression but have also side earth bank (look at the picture below)

**Out of bounds areas** are not allowed for crossing. It can be dangerous to enter this area due to different reasons.

## Explanation of the brown triangle for map Kalnik



### 115 Prominent landform feature (P)

The feature must be very clearly distinguishable from its surroundings.  
Location is the centre of gravity of the symbol, which is orientated to north.  
The symbol shall not touch or overlap other brown symbols.  
The definition of the symbol must be given on the map.

There are many historical remains of forestry works, probably charcoal burning sites. They look like a small or large perfectly round depression, sometimes deep, but depression is not visible when coming from lower ground or from a side. What a runner first sees looks like a hill. Altogether the feature is too small to be precisely shown, therefore a ISOM symbol NO. 115 is used. Only a couple of those features, which are very large, are drawn to scale.

On the map



In the nature



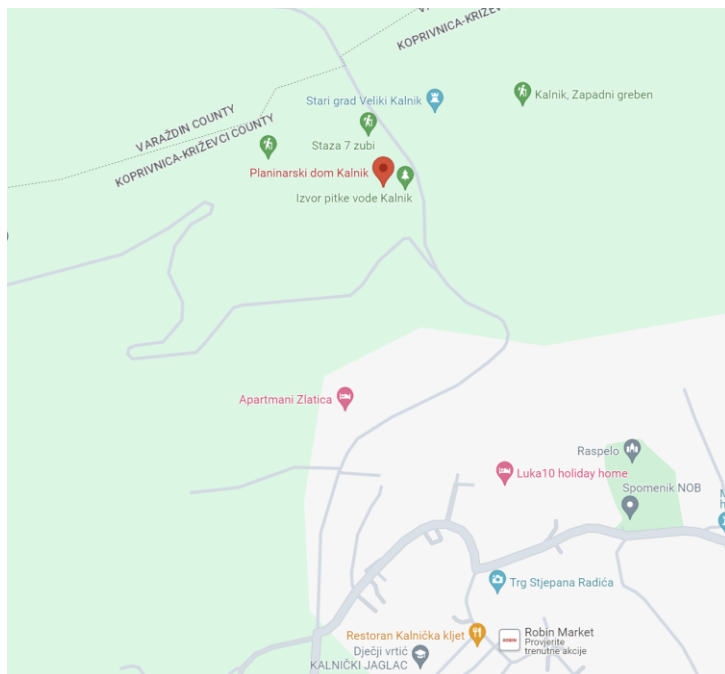
View from above if it was possible to draw it in larger scale



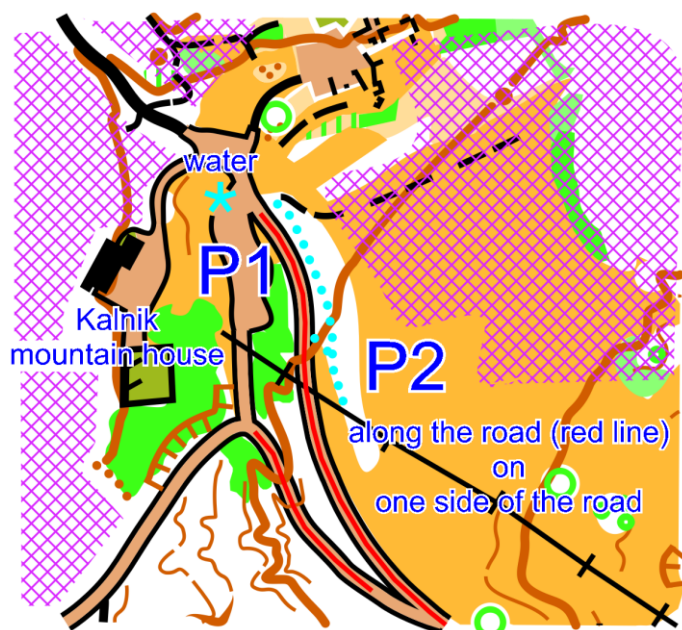
Comparison of features, as mapped:



## STAGE 2 , and 4 – Kalnik - Whereabouts



You can park your car on parking lot in front of the Mountaineering hut on Kalnik. Please follow our parking guides so everybody can park. There are limited number of places so during weekends there can be many cars parked there so come early. When the parking lot is full, new parking line will be formed on the one side e of the street.



Park your vehicle on parking place P1. If all the places are occupied, please park along the road (red line on the map) on one side. Please park so that other vehicles and emergency vehicles can pass through



### Map Protection:

Maps are printed on **plastic paper**, which is water and tear resistant, so there is absolutely no need for a plastic bag.

### Bib Numbers:

All competitors are obligated to wear bib number / Start number on their chest on the competition.

Please take your own safety pins for number bib. We will have certain amount of them in CC.

### Control Descriptions:

There will be **no** control descriptions available prior to the starting corridors. Control descriptions for hand-holders will be provided at the Start, inside the second starting corridor for all Stages. Control descriptions **are also printed on the maps** for all Stages.

### Starting List

All the categories, including Open, are required to Start by Start list.

### Starting procedure

The Starting procedure is as follows:

- 3 Minutes: checking Start bib and Si Card number, clean and check Si Cards
- 2 Minutes: take control descriptions (they are on all the maps, also)
- 1 Minute:
- 0 Start (no Start-unit)
- map taking
- Passing by a Starting Point is mandatory

### Late Starters

**WARNING:** There will not be a direct route to Starting line for runners arriving late to the Start. Anybody arriving late will be let on a course only when a marshal approves, probably on a vacant spot, and new Starting time will not be granted. In the results the original Starting time will count! Starting on time according to the Start list is competitor's responsibility. Only in case of a special complications an organizer may give a competitor a new Starting time.

### Taking maps and giving them back:

At the Start, each competitor takes the map at his/her own responsibility. Check it to make sure that the one with correct course was taken. After the Finish you are kindly asked for fair play not to show your map to the runners who haven't Started yet. We will not collect the maps on Stages 2 & 4. On Stages 1 & 3 we will collect the maps until the Start Finishes so please put your map in the bag or place with the name of your club

### Map Exchange during the Race

There will be no map exchanges.

### Timekeeping

All categories, including Open, are controlled through the SPORTident system (SIAC contactless). You can use any SI-Card from version 5 above.

It is possible to rent SI-Card for 2€ per Stage. Upon renting you will be asked for 40€ deposit (per card) or a personal document (optionally), which you will be given back immediately after SI-card is returned.

Rented SI-Card will be withdrawn after the last Stage at which the competitor is registered.

If the SI-Card is lost by the competitor s/he must pay a penalty of 40€.

## Read-out of SI Cards

Read out of SI Cards is located near the Finish line for all Stages. Don't forget to read out the data immediately after you Finish the race.

## Results

Live results will be displayed at the Finish area and online. Use QR code which will be on display at Finish area.

## SI Station Working and Control Placement Insurance

Use if Sportident fails:
R1
R2
R3

In the case of SI station on control not working the competitor must punch manually into his own map, on the place which is printed for manual punching.

The competitor then must warn the organizer and hand out a map with those punches to the organizers upon his Finish.



Most of control flags in town will be guarded.

Organizer will put little papers around the control on the ground, with number of control point so only if the control point is **missing** take the paper with you and bring it to the Finish.

## Vehicle Traffic on Courses

Forest terrains have no car-traffic, only minor non-paved vehicle tracks with minor traffic (quads and tractors).

For Sprint Stage, most of the courses are with only light traffic. There will be no mandatory crossings. Traffic will not stop at any time. /

## Tents:

Clubs are allowed to pitch a tents on Stages 2, 3 and 4. On Stage 1 you can use stadium seats which are sheltered from the rain. The organizer will provide smaller tents for baggage only on Stages 2, 3 and 4 in case of bad weather, so please be considerate with using that space.

## Baggage Transport:

There will be no organized transport of baggage or clothes. Please, **don't leave clothes on the Start**, since Start areas are so nearby Finish areas, otherwise you will collect them on your own.

## Separate Start

If you are with a small child, the parents may request separate Starting times in advance. Make request as early as possible now, with your application, in written form. These requests will be handled as far as possible and only upon a personal request.

## Photo/video:

**GDPR (General Data Protection Regulation)** - It is presumed that everybody participating approves of being photographed / filmed. The photos / videos / will be used strictly referring to this event and sports purposes. If anybody object to this, please inform the organizer in advance. Then, in case your personally recognizable image mistakenly appears at organizers website, inform us later, and we will take it down.

### **Currency and Payments in Croatia:**

The currency in Croatia is Euro.

Money exchange offices ("Mjenjačnica") are convenient everywhere, but most of them have working hours. Banks and post offices will also change money at about the same rate as exchange offices but their opening hours are shorter. You will pay a commission of about 3%. ATMs are convenient and reliable. Just look for the "Bankomat" sign.

Payment via debit cards or credit cards is acceptable almost in every store or a restaurant, but if you want to buy smaller things like ice-cream or drinks etc. you can only pay in cash in Euro.

### **Weather Conditions:**

Climate in Zagreb and Križevci is continental. May / June is not yet summer, with the average temperatures rarely falling below 15°C or exceeding 33°C, but last couple of seasons the temperatures might hit higher than 25°C. A thunderstorm once every 3-4 days can be expected, as well as it is possible to have a few rainy days in a row. An umbrella and raincoat are convenient to take care of the rain. On the Kalnik mountain it might be windy.

For precise weather forecast during the Event check out the Croatian meteo service: [www.meteo.hr](http://www.meteo.hr)

Use sunscreen, since you can get very sunburned. Drink plenty of water, stay hydrated.

Use mosquito repellent on forest Stages.

### **First Aid and Ambulance:**

A medical doctor will be present on every Stage at the Finish area.

Organizer does not insure competitors. Organizer takes no responsibility for any injuries or health issues that might happen or occur among the participants before, during or after competitions. Each competitor takes part solely on his/her own responsibility. Personal health and travel insurance policy is recommended.

**In a case of a serious problem the Ambulance Emergency will be called. The common emergency telephone number is 112. It can be dialed free of charge from any fixed or mobile telephone in order to reach emergency services (ambulance, fire and rescue, police). There is also a direct number 194 for Emergency medical help. Emergency medical care in Croatia is provided for free to anyone requiring urgent attention. Any cost of possible later therapy must be covered by patients' personal insurance. In cases of therapy, the European Health Insurance Card (EHIC) is valid in Croatia, but only for those who own it. Any costs that may emerge, and EHIC does not cover, shall be covered by a patient.**

### **Shops and Markets:**

There is a national holiday on Thursday 2024-05-30. Most of the shops and supermarkets will not work. Also on Sunday.

You can eat or have a drink in the Mountaineering house Kalnik just beside the Finish area

On Sunday, most of shops and supermarkets are not working!!! Do your shopping on Saturday!

## Accommodation:

Zagreb – capital of Croatia is only 60 minutes of driving from Kalnik mountain and about 45 from town Križevci so accommodation in Zagreb is available here (around Zagreb we have many orienteering maps so training possibilities before and after the Event are available around Zagreb):

- [Apartments](#)
- [Hostels](#)
- [Camping, Glamping and Bungalows in Zagreb](#)
- [Camping Croatia](#)

Križevci – only 20min from Kalnik – [Accommodation](#)

Kalnik – has only some small number of available beds (please look at booking.com if available) but there is a possibility to put out the tent on the meadow near mountain hut Kalnik (it is not flat) for some small fee (5€/night). Toilet and spring water will be available and you can eat on mountain hut if you want or you can drive to town Križevci for some extra food).

Camping will be available after the race on Thursday evening until Sunday.

Accommodation Varaždinske toplice:

- [Hotels & pensions](#)
- [Houses](#)
- [Appartments](#)
- 

Križevci – only 20min from Kalnik – [Accommodation](#)

## Camper Vans and Camping:

There are few spots where you can park free. Camping for a small fee will be possible on the mountain Kalnik. Please contact us on e-mail before the Event.



We made our event T-shirt for those who wish to take something from the Event except great memories from the forest. We decided to go with a “retro” design since all of the races will be held in historically significant surroundings – old town of Križevci and old legendary Kalnik castle to pay respect to all the ones that were orienteering there centuries before us.

T-shirt is warm sandy color which fit women and men, young and those in best age for orienteering and it is wearable in our “ordinary” lives. It is made of cotton fabric (190g) with a quality digital print.

For those who order it online t-shirt will be in their club bag and only few will be available for sale.





Although small in terms of surface area, Croatia abounds in rich culture heritage. This is substantiated by UNESCO's World Heritage List with a registered 22 tangible and intangible goods in the Republic of Croatia. There is hardly a city or region where you will not encounter them. Find out if you are familiar with some of them already, and whether they are included on your list of things to see and try on your trip to Croatia.

[Croatia for tourists](#)



Discover Zagreb one of the most vibrant European cities, rich in cultural heritage, a dynamic atmosphere and breathtaking green areas [Zagreb tourist board](#)



The city of Križevci is located at the crossroads of roads that connect regional centers: Zagreb, Koprivnica, Bjelovar and Varaždin. One of the associations in the name of the city, accidentally or intentionally, points us to the intersection of roads, as this area was since antiquity and the Middle Ages a crossroads of traffic routes. Križevci was on the way of the the King Koloman road connecting Pannonian and Adriatic ends.

[Tourist board Krizevci](#)

City museum / Gradski muzej Križevci - [City museum Križevci](#)

Hedona Chocolateria:

<https://hedona.hr/en/about-us-en/> <https://hedona.hr/>

Shopping centers / shopping centar:

<https://www.supernova-krizevci.hr/>

<https://www.lidl.hr/s/hr-HR/trazilica-trgovina/kri%C5%BEEvci/ulica-nikole-tesle-2/>



### Summary:

To make it easier on organizers, please:

- Enjoy the race and your holidays
- Be on time.
- Protect yourselves from injuries wearing appropriate clothes.
- Take a lot of water and liquid with you due to possible high temperature, stay hydrated.
- If there is a problem contact us and we will try to solve it

Official web page: [Zagreb Open 2023 - Croatia 4 Days – vihor.hr](https://zagrebopen2023.hr)



[vihor@vihor.hr](mailto:vihor@vihor.hr)



[\(1\) Zagreb Open Orienteering Event - Croatia 4 days | Zagreb | Facebook](#)

<https://www.instagram.com/zagrebopen>

[\(1\) Zagreb Open Orienteering Event - Croatia 4 days | Facebook](#)

Impressum: Editors: Ivana & Damir Gobec  
OK Vihor  
Ribnjak 2, 10000 Zagreb / Croatia  
[www.vihor.hr](http://www.vihor.hr) / [vihor@vihor.hr](mailto:vihor@vihor.hr)

